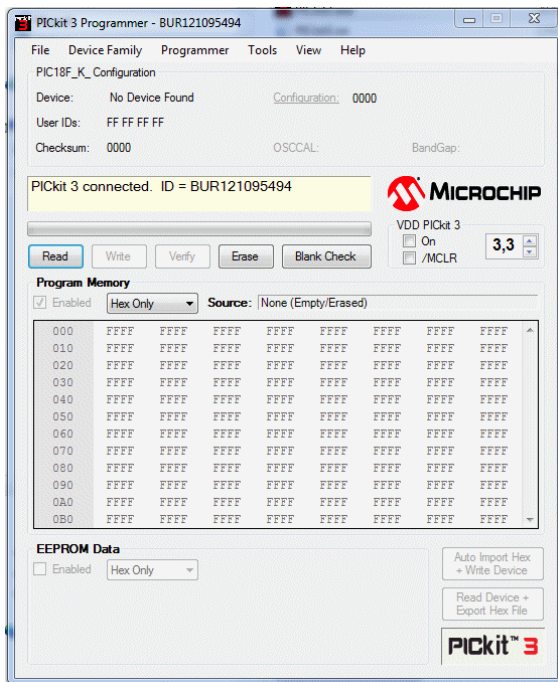


## PICKit 3 General Programming instructions:

### 1. PICKit 3 programmer software installation for use with the PICKit 3 hardware programmer.

1.1. Install the latest programmer software from the enclosed 'PICKit3\_programmer.zip' archive.

1.2. Connect the hardware PICKit 3 programmer to your PC and start the software: double click "PICKit3.exe"  
Do not connect the programming cable to a pcb yet.

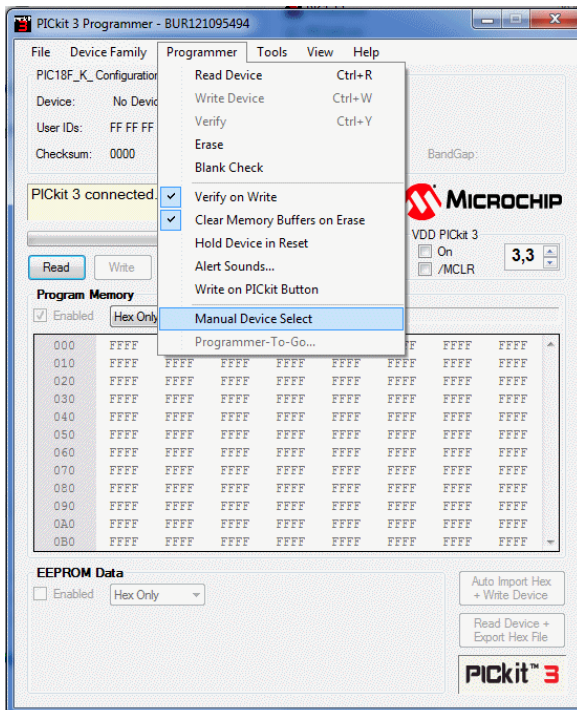


#### 1.2.1. Tested compatibility OS:

- \* Windows XP SP, 32-bit with .NET 4.0 installed.
- \* Windows Vista, 32-bit with .NET 4.0 installed.
- \* Windows 7, 64-bit.

### 1.3. PICKit 3 Software Settings:

1.3.1. Goto "Programmer" and leave the 'Manual Device Select' Unchecked.





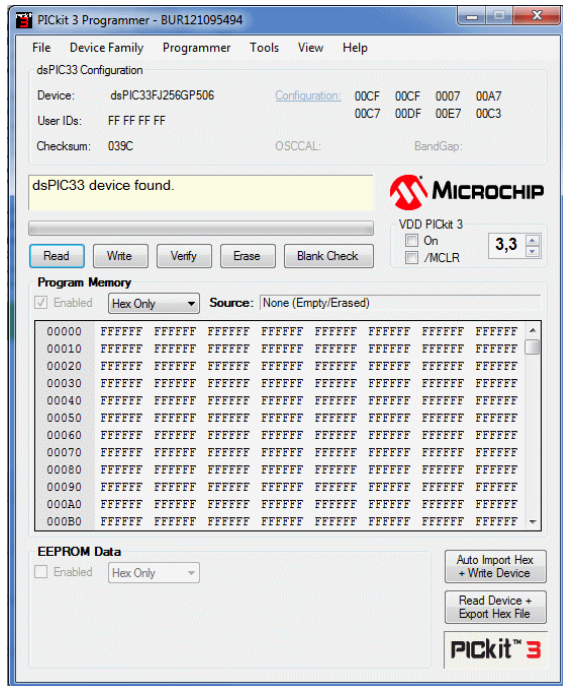
## 2.0. PIC chip firmware Programming (uploading the hex to your pcb.)

2.1. Connect the programming cable to your pcb. Try without powering the pcb first.

2.2. Click 'Device Family' and choose the PIC family type.

- For the PIC18F25K20 → select 'PIC18F\_K\_'
- For the dsPIC33FJ256GP506 → select 'dsPIC33'
- For the PIC18F2520 → select 'PIC18F'

The chip should be detected now:



2.3. Open the hex file: click 'File' and 'Import hex' and select the hex file needed.

2.4. Choose 'Write' to upload to hex file to your pcb; will take around 4...30 seconds.

2.5. You should get the confirmation of correct programming. Done!

